

# E-BUTTONS

## Jeans Buttons



**E 157** ( 2.28 gr)  
14 mm 22 L Jeans Button Dot Patterned



**E 907** ( 3.21 gr)  
15 mm 24 L Anchor Logo Jeans Button



**E 1228** ( 3.1 gr)  
15 mm 24 L Flower and Heart Patterned Jeans Button



**E 504** ( 3.5 gr)  
15 mm 24 L Jeans Button Enamel Jenas Button



**E 416** ( 3.75 gr)  
15 mm 24 L Cambered Jeans Button



**E 1081** ( 2.7 gr)  
15 mm 24 L Eagle Logo Jeans Button

# E-BUTTONS

## Jeans Buttons



**E 821** ( 2.45 gr)  
15 mm 24 L Enameled Jeans Button



**E 1550** ( 3.16 gr)  
15 mm 24 L Ring Pattern Enameled Jeans Button



**E 1627** ( 4.1 gr)  
15 mm Flat Coin Shape Jeans Button



**E 532** ( 3.6 gr)  
16 mm - 26 L Stylish Patterned Jeans Button



**E 1115** ( 5 gr)  
17 mm - 28 L Cambered Jeans Button



**E 191** ( 4.3 gr)  
17 mm - 28 L Curved and Patterned Jeans Button



# E-BUTTONS

# Jeans Buttons



**E 1113** ( 5 gr)  
17 mm - 28 L Elegant Patterned Jeans Button



**E 1378** ( 3.7 gr)  
17 mm - 28 L Star Patterned Jeans Button



**E 1184** ( 4 gr)  
17 mm 26 L Screw Shape Jeans Button



**E 1176** ( 3.29 gr)  
17 mm 27 L Enameled Plain Jeans Button



**E 1030** ( 4.09 gr)  
17 mm 27 L Crown Logo Jeans Button



**E 936** ( 3.11 gr)  
17 mm 27 L Hole in the Middle of Length  
Jeans Button Button

# E-BUTTONS

## Jeans Buttons



**E 247** ( 5.56 gr)  
17 mm 27 L Motif Patterned Snap Button



**E 1060** ( 3.51 gr)  
17 mm 27 L Ring Pattern Enameled Jeans Button



**E 940** ( 3.15 gr)  
17 mm 27 L Ring Pattern Enameled Jeans Button



**E 566** ( 3.4 gr)  
17 mm 27 L Shield Logo Jeans Button



**E 732** ( 4.03 gr)  
17 mm 27 L Star Pattern Snap Button



**E 304** ( 4.46 gr)  
17 mm 28 L Jeans Button Enamel Jeans Button

# E-BUTTONS

# Jeans Buttons



**E 309** ( 3.8 gr)

17 mm 28 L Jeans Button with Decorative Pattern



**E 906** ( 4.23 gr)

17 mm 28 L Anchor Pattern Snap button



**E 415** ( 5.05 gr)

17 mm 28 L Cambered Jeans Button



**E 2027** ( 3 gr)

17 mm 28 L Enamel Jeans Button



**E 1377** ( 4 gr)

17 mm 28 L Flat Coin Shape Jeans Button



**E 156** ( 2.95 gr)

17 mm 28 L Jeans Button Dot Patterned Hole in the Center

# E-BUTTONS

# Jeans Buttons



**E 164** ( 4.7 gr)

17 mm 28 L Jeans Button Embossed Dot Pattern



**E 446** ( 1.5 gr)

17 mm 28 L Jeans Button with Crown Logo



**E 638** ( 5 gr)

17 mm 28 L Jeans Button with Logo



**E 863** ( 5 gr)

17 mm 28 L Octagonal Design and Enamel Jeans Button



**E 869** ( 3.67 gr)

17 mm 28 L Patterned Enameled Jeans Button



**E 848** ( 3.5 gr)

17 mm 28 L Patterned Jeans Button

# E-BUTTONS

# Jeans Buttons



**E 853** ( 4.22 gr)  
17 mm 28 L Patterned Jeans Button



**E 857** ( 4.46 gr)  
17 mm 28 L Patterned Jeans Button



**E 1844** ( 4.9 gr)  
17 mm Diamond Design Fastening Button



**E 1434** ( 3.4 gr)  
17 mm Dotted Simple Fastening Jeans Button



**E 173** ( 4.5 gr)  
17 mm Jeans Button - Snap Jeans Button -  
Zinc Alloy



**E 1192** ( 4.47 gr)  
17 mm Plain Stone Hole Punching Button



# E-BUTTONS

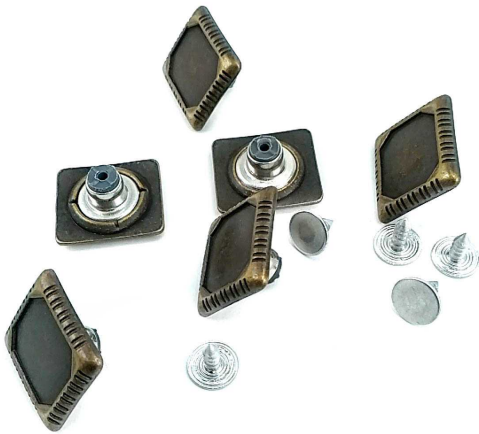
# Jeans Buttons



**E 1371** ( 2.93 gr)  
17 mm Point Patterned Fastening Jeans Button



**E 1045** ( 4.72 gr)  
17 mm Straight Denim Button with Dots and Lines



**E 855** ( 5 gr)  
17.5 mm-19.7mm Rectangular Metal Jeans Button



**E 200** ( 3.6 gr)  
18 mm - 30 L Geometric Pattern Jeans Button



**E 1546** ( 4.4 gr)  
18 mm 26 L Ring Pattern Enameled Jeans Button



**E 1374** ( 4.23 gr)  
18 mm 28 L Flat Coin Type Jeans Button

# E-BUTTONS

## Jeans Buttons



**E 972** ( 3.7 gr)  
18 mm 29 L Enamelled Jeans Button



**E 964** ( 3.2 gr)  
18 mm 29 L Dot Pattern Snap Button



**E 937** ( 4.12 gr)  
18 mm 29 L Enamel Jeans Button



**E 503** ( 5.06 gr)  
18 mm 29 L Enamelled and Patterned Jeans Button



**E 929** ( 6 gr)  
18 mm 29 L Line Pattern Jeans Button



**E 762** ( 7.62 gr)  
18 mm 29 L Patterned Snap Button

# E-BUTTONS

# Jeans Buttons



**E 872** ( 3.77 gr)  
18 mm 29 L Star Design Jeans Button



**E 1027** ( 3.51 gr)  
18 mm 29 L Swirl Patterned Jeans Button



**E 962** ( 4.92 gr)  
18 mm Patterned Lines and Shapes Push-button



**E 571** ( 5.35 gr)  
18 mm Plus Pattern Fastening button



**E 1450** ( 5.1 gr)  
19 mm - 30 L Jeans Button Honeycomb  
Patterned



**E 1375** ( 5 gr)  
19 mm 30 L Center Hole Jeans Button

# E-BUTTONS

## Jeans Buttons



**E 1118** ( 5 gr)

19 mm 30 L Jean Button Rivet Nails - Straw Pattern



**E 1061** ( 4 gr)

19 mm 30L Jeans Button - Metal Snap Denim Button



**E 1080** ( 4.5 gr)

19 mm Jeans Button - Metal Jeans Button - Snap Button



**E 885** ( 5.1 gr)

19 x 17 mm Rectangular Enameled Jeans Button



**E 1004** ( 5 gr)

20 mm - 32 L Dot Patterned Jeans Button



**E 396** ( 4 gr)

20 mm - 32 L Flat Coin Shape Jeans Button

# E-BUTTONS

# Jeans Buttons



**E 1277** ( 4.5 gr)

20 mm - 32 L Logo Pattern Jeans Button

**E 1358** ( 4.3 gr)

20 mm - 32 L Logo Pattern Jeans Button



**E 237** ( 5.9 gr)

20 mm - 32 L Patterned Jeans Button

**E 531** ( 4.28 gr)

20 mm 32 L Aesthetic Jeans Button



**E 327** ( 5 gr)

20 mm 32 L Jeans Button - Jeans Snap Button  
Women's Head Patterned

**E 311** ( 6.17 gr)

20 mm 32 L Jeans Button Motif Patterned  
Stylish Snap Button



# E-BUTTONS

# Jeans Buttons



**E 1067** ( 4.83 gr)  
20 mm 32 L Line Pattern Jeans Jacket Button

**E 859** ( 4.1 gr)  
20 mm 32 L Stars Patterned Snap Button



**E 905** ( 5 gr)  
20 mm 32 L Anchor Pattern Jeans Button

**E 933** ( 4.76 gr)  
20 mm 32 L Cambered Jeans Button



**E 934** ( 3.6 gr)  
20 mm 32 L Cambered Plain Jeans Button

**E 1029** ( 5.84 gr)  
20 mm 32 L Crown Logo Jeans Button

# E-BUTTONS

## Jeans Buttons



**E 1032** ( 4.6 gr)  
20 mm 32 L Denim Button Enamel Decorative  
Flower Pattern



**E 1117** ( 3.67 gr)  
20 mm 32 L Esthetically Designed Jeans  
Button



**E 994** ( 5.8 gr)  
20 mm 32 L Flower Garden Pattern Jeans  
Button



**E 834** ( 4.01 gr)  
20 mm 32 L Flower-Shaped Center Dotted  
Jeans Buttons



**E 1300** ( 4 gr)  
20 mm 32 L Hole in the Center Jeans Button



**E 223** ( 6.74 gr)  
20 mm 32 L Jeans Button Enameled Button  
Square Patterned

# E-BUTTONS

## Jeans Buttons



**E 534** ( 4.41 gr)  
20 mm 32 L Jeans Button Enameled Jeans  
Button



**E 155** ( 4.3 gr)  
20 mm 32 L Jeans Button Snap Button Dot  
Patterned



**E 334** ( 4.95 gr)  
20 mm 32 L Jeans Button Sun Patterned  
Rhinestone Buttons



**E 1215** ( 4.55 gr)  
20 mm 32 L Patterned Enameled Jeans Button



**E 1011** ( 5.66 gr)  
20 mm 32 L Patterned Jeans Button



**E 844** ( 4.18 gr)  
20 mm 32 L Patterned Jeans Button

# E-BUTTONS

## Jeans Buttons



**E 847** ( 4.51 gr)  
20 mm 32 L Patterned Jeans Button



**E 202** ( 3.58 gr)  
20 mm Aesthetic jeans Bbutton



**E 1385** ( 6.93 gr)  
20 mm Apple Design Stone Jeans Button



**E 158** ( 4.85 gr)  
20 mm Flower Embroidered Lever button



**E 234** ( 4.77 gr)  
20 mm Ivy Design Jeans Button



**E 1068** ( 5.95 gr)  
20 mm Patterned Jeans Button

# E-BUTTONS

## Jeans Buttons



**E 2045** ( 4 gr)  
20 mm Royal Logo Jeans Button



**E 1395** ( 6.57 gr)  
20.5 mm 32 L Jeans Button Flat Coin Shape



**E 820** ( 5 gr)  
21 mm 32 L Flat Coin Type and Enameled  
Jeans Button



**E 862** ( 5.35 gr)  
21 mm 34 L Octagonal Enameled Jeans Button



**E 575** ( 4.18 gr)  
22 mm 34 L Patterned and Enameled Jeans  
Button



**E 316** ( 7.65 gr)  
22 mm 35 L Brand Written Jeans Button



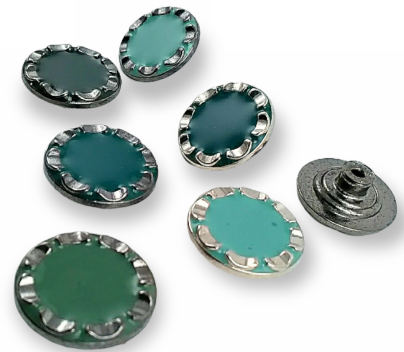
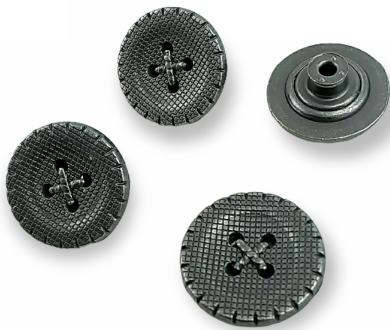
# E-BUTTONS

# Jeans Buttons



**E 916** ( 6.95 gr)  
22 mm 37 L Enamel Plain Jeans Button

**E 338** ( 7.7 gr)  
22 mm 37 L Stitch Mark Snap-in button



**E 653** ( 4.57 gr)  
22 mm 37 L Button Look Jeans Button

**E 868** ( 5.21 gr)  
22 mm 37 L Enamel Edge Patterned Jeans Button



**E 502** ( 5 gr)  
22 mm 37 L Patterned Enamel Jeans Button

**E 871** ( 4.86 gr)  
22 mm 37 L Star Detailed Jeans Button

# E-BUTTONS

## Jeans Buttons



**E 865** ( 4.67 gr)  
22 mm 37 L Wavy Patterned Jeans Button



**E 629** ( 6.44 gr)  
22 mm Crown Design Fastening Button



**E 235** ( 10.15 gr)  
22 mm Insect Logo Knob



**E 192** ( 8.15 gr)  
22 mm Ivy Design Jeans Button



**E 335** ( 7 gr)  
22 mm Patterned Jeans Button



**E 245** ( 8.9 gr)  
22 mm Stoned & Enameled Fastener

# E-BUTTONS

## Jeans Buttons



**E 333** ( 6.3 gr)

23 mm 36 L Jeans Button Rhinestone Sun  
Patterned



**E 433** ( 8.41 gr)

23 mm 37 L Rhinestone Star Design Snap  
Button



**E 580** ( 3.55 gr)

15 mm - 24 L Jeans Button Convex and  
Patterned



**E 1019** ( 3.57 gr)

16 mm 26 L Aesthetic Patterned Jeans Button



**E 931** ( 4.35 gr)

16 mm 26 L Jeans Button with Apple Logo



**E 974** ( 3 gr)

16 mm 26 L Dotted Stripe Fastening Button

# E-BUTTONS

## Jeans Buttons



**E 497** ( 3.57 gr)

16 mm 26 L Jeans Button Motif Patterned  
Snap Button



**E 926** ( 3.92 gr)

16 mm 26 L Line Pattern Aesthetic Jeans  
Button



**E 845** ( 3.12 gr)

16 mm 26 L Patterned Jeans Button



**E 860** ( 3.5 gr)

17 mm 28 L Daisy Patterned Jeans Button



**E 342** ( 7.56 gr)

19 mm 30 L Jeans Button - Zinc Alloy Denim  
Button Fish Pattern



**E 434** ( 5.55 gr)

19 mm 30 L Rhinestone Flower Design Jeans  
Button

# E-BUTTONS

# Jeans Buttons



**E 825** ( 5.53 gr)  
19 mm 30 L Butterfly Logo Jeans Button



**E 939** ( 3.6 gr)  
19 mm 30 L Enamel Ring Pattern Jeans Button



**E 1202** ( 5.1 gr)  
19 mm Retro Jeans Button



**E 1350** ( 6.05 gr)  
19 mm Simple Design Jeans Button



**E 574** ( 5.83 gr)  
24 mm / 38 Length Edges Patterned Metal  
Button



**E 199** ( 6.5 gr)  
24 mm 38 L Patterned Zamak Jeans Button



# E-BUTTONS

# Jeans Buttons



**E 371** ( 5 gr)  
Alloy button 17 mm



**E 1454** ( 4 gr)  
Alloy button 19 mm